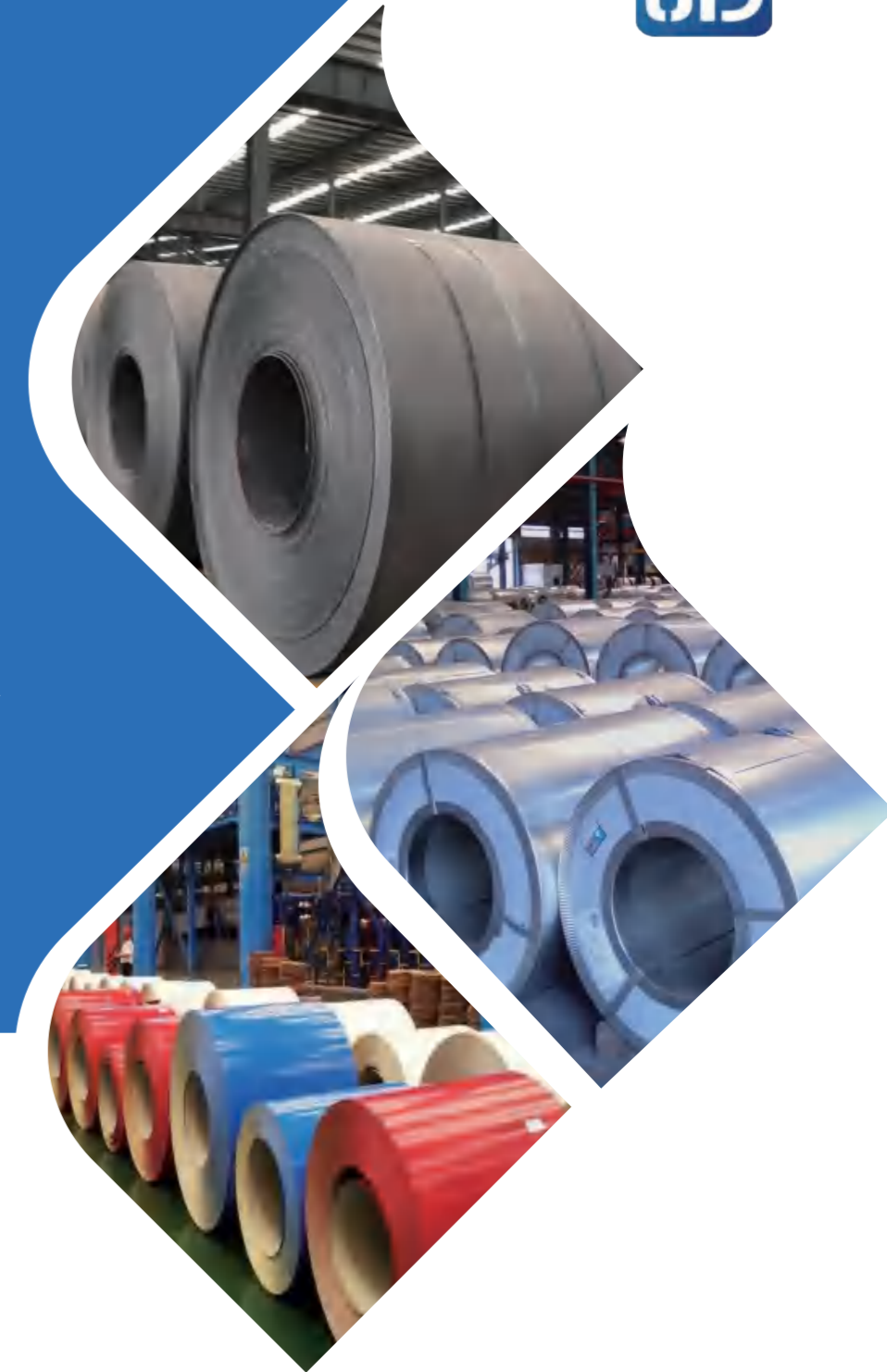


金属材料一站式采购
让采购变的容易

One-Stop solution for Metal Raw Material
Making Purchase Easy



金明简德
JIN MING JIAN DE



TEL: +86 18061535028 +86 18961746817

EMAIL: info@wxjmdss.com

WEB: <http://www.steeltd.com>

OFFICE ADDRESS: 2102-2105, Yuexing Building, Guangyi Road, Liangxi District, Wuxi Jiangsu, CN

FACTORY ADDRESS: Nongshi Road, #07, Dongbei Tang District, Xi Shan, Wuxi Jiangsu, CN, Zip: 214000

无锡金明简德科技有限公司

WUXI JIN MING JIAN DE INDUSTRY&TRADE CO., LTD

目录

CONTENTS

品牌篇 Brand

- 01 发展历史 Development history
- 02 企业简介 Enterprise profile
- 03 企业文化 Corporate culture

产品篇 Products

- 01 镀锌 Galvanizing
- 02 碳钢 Carbon steel

仓储、加工、包装 Stock, process, packing

- 01 加工中心 Process Center
- 02 仓储中心 Stock
- 03 包装 &装柜 Packing&Loading

质检篇 Quality inspection section

- 01 检测报告 Test report
- 02 第三方检验 Third party inspection



库存充足
Adequate Stock



质量保证
Quality Assurance



售后保障
After-sales Guarantee

FOUNDER OF THE COMPANY

公司创始人



XUEXU LIU

刘学绪

Wuxi Cross-border Internet Merchants Association

Shandong Chamber of Commerce in Wuxi City

Wuxi Jin Ming Jian De Industry & Trade Co.,Ltd

2015 Alibaba East China Region Sharing Masters Tournament

Wuxi Vocational and Technical College of Commerce

无锡跨境网商商会

无锡市山东商会

无锡金明简德科技有限公司

2015阿里巴巴华东大区分享达人赛

无锡商业职业技术学院

Honorary President

Vice president

Chairman of the Board

Champion

Cross-border e-commerce mentor

名誉会长

副会长

董事长

总冠军

跨境电商导师

In 2013, engaged in cross-border e-commerce industry

In 2014, Wuxi Jin Ming Jian De Industry & Trade Co.,Ltd

In 2015, established.Wuxi Cross-border E-commerce Association

In 2015, signed a contract as a gold lecturer of Alibaba cross-border business division of sharing network business

In 2016, Alibaba organized the Shanghai • Su • Hui Online Merchants Sharing Talent Competition, and won the overall champion of Alibaba East China Region Sharing Online Merchants Talent Competition from more than 2,000 online business, entrepreneurs. In that year, he toured more than 100 speeches

all over the country, influenced and guided more than 20,000 cross-border e-commerce enterprises, and received more than 5,000 people from all over the country to visit and study in our company. In the same year, in cooperation with the government of Liangxi District, Liangxi District cross-border e-commerce incubation base was established.

In 2017, it won the honorary title of Jiangsu Cross-border E-commerce Demonstration Base. In 2017, he initiated and established Wuxi Shandong Chamber of Commerce for 300,000 people in Wuxi, and served as vice president and director of cross-border e-commerce committee of Shandong Chamber of Commerce. In 2018 Established cross-border e-commerce training base in Wuxi Taihu University to serve cross-border e-commerce enterprises in Wuxi and surrounding markets.

In 2019, successfully assisted Wuxi Taihu University to apply for and set up Wuxi Cross-border E-commerce Business School.

In 2020, under the influence of the international environment, engaged in foreign trade of epidemic prevention materials.

In 2021, returned to the steel industry, new aluminum, carbon steel, galvanized and other steel categories

I have been committed to the cross-border e-commerce industry, and have influenced the local cross-border e-commerce industry in Wuxi with my actual actions. I have also been growing on the road of sharing. "Growing together and sharing resources" is my firm belief on the road of sharing.

2013年从事跨境电商行业

2014年成立无锡金明简德科技有限公司

2015年成立跨境电商社团组织，即无锡跨境网商商会。

2015年签约阿里巴巴跨境事业部分享型网商企业金牌讲师

2016年阿里巴巴组织沪·苏·徽网商分享达人赛，从 2000 余名网商企业家当中，获得阿里巴巴华东大区分享型网商达人赛总冠军。于当年全国各地巡回演讲 100 余场，影响并指导了跨境电商企业 2万余家，接待了全国各地来我公司参观学习人数达5000 余人。并于同年与梁溪区政府合作，成立了梁溪区跨境电商孵化基地。

2017 年获得江苏省跨境电商示范基地荣誉称号。

2017 年为山东驻无锡 30 万人发起并成立了无锡市山东商会，并担任副会长、山东商会跨境电商委员会主任。

2018 年在无锡太湖学院成立了跨境电商实训基地，服务无锡及周边市场的跨境电商企业。

2019 年成功协助无锡太湖学院申请并成立了中国无锡跨境电商学院。

2020 年受国际大环境影响，从事防疫物资的对外贸易

2021 年重回钢材行业，新增铝材，碳钢，镀锌等钢材品类

本人一直致力于跨境电商行业，以自己的实际行动影响着无锡本地的跨境电商行业，也一直在分享的路上成长，“抱团成长，资源共享”是我一直在分享路上的坚定信念。

DEVELOPMENT HISTORY

发展历程

The development history of JMJD
金明简德发展历程

不忘初心，砥砺前行
Never forget why you started, and forge ahead with determination

2009 年

创始人刘学绪先生创立了最初的不锈钢销售公司。主要做国内市场。

Founder Mr. Liu Xuexu established the initial stainless steel sales company, mainly serving the domestic market.

2010 年

公司团队组建

Company team established

2011 年

我们的阿里巴巴平台上线了，我们开始了不锈钢和碳钢的出口贸易。

Our Alibaba platform is now online, and we have begun exporting stainless steel and carbon steel.

2012 年

阿里巴巴平台增加到6个。

The number of Alibaba platforms we operate on has increased to six.

2013 年

公司制度进一步完善，新增运营部门

The company system was further improved, and new operating departments were added.

2014 年

我们更名为金明简德，人数增长到49人，开始了铝出口

We renamed ourselves as JMJD, employees has grown to 49, starting to export aluminum.

2015 年

2015年我们稳步发展，搬进了新办公室

we developed steadily and moved into a new office.

2016 年

刘学绪先生发起成立无锡商会并任首任会长，我司成为会长单位

Mr. Liu Xuexu initiated the establishment of the Wuxi -Commerce Chamber of Commerce and served as the first president. We became the chairman company.

2017 年

刘学绪先生担任山东商会副会长，我们成为无锡山东商会副会长单位

Mr. Liu Xuexu served as the vice president of Shandong Chamber of Commerce, We became the vice chairman company.

2018 年

我们的进出口额突破往年，业绩翻倍

Our import and export volume exceeded previous years, and our performance doubled.

2019 年

我们拥有了自己的储存仓库和加工中心

We have our own storage warehouse and processing center.

2020 年

我们又增加几台新设备，生产效率进一步提高

We have added several new equipment to further improve production efficiency.

2021 年

质检，售后部门的制度进一步完善，积累了大量的老客户，公司处于稳步发展

Quality control and after-sales department's systems have been further improved, accumulating a large number of loyal customers, and the company is in a steady development.



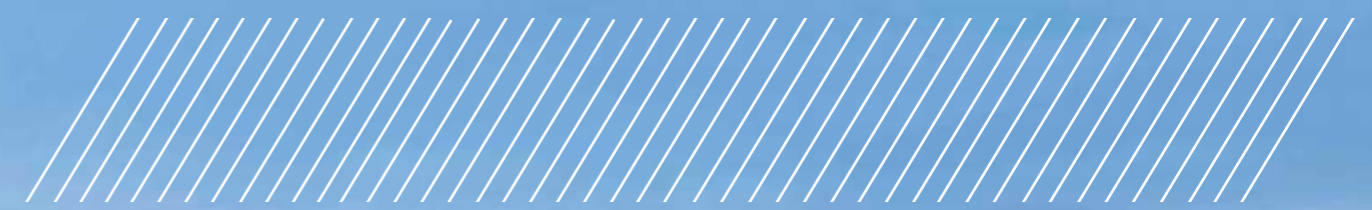
大品牌·一站式·省心实惠
BIG BRAND, ONE-STOP, WORRY-FREE & AFFORDABLE

品牌篇

BRAND


01

PART ONE



ENTERPRISE PROFILE

企业简介

<https://www.steeld.com> 

JMJD is a leading manufacturer and exporter of high-quality steel products based in China. With over 10 years of experience in the industry, the company has established itself as a trusted supplier of stainless steel, aluminum, carbon steel, galvanized, and color-coated coils to customers worldwide.

The company's state-of-the-art manufacturing facilities are equipped with the latest technology, allowing it to produce a wide range of steel products that meet the highest industry standards. Its skilled workforce ensures that every product is made with precision and care, ensuring that customers receive only the best quality products.

In addition to its focus on quality, Jinming Jiande Group is committed to providing excellent customer service. Its team of experts works closely with customers to understand their specific needs and provide tailored solutions that meet their requirements. The company also offers timely delivery and competitive pricing, making it an ideal partner for businesses of all sizes.

Jinming Jiande Group's dedication to quality, customer service, and innovation has earned it a strong reputation in the industry. Its products are used in a variety of industries, including construction, automotive, appliances, and more. The company is constantly striving to improve its products and services, ensuring that it remains at the forefront of the industry.

With a global network of customers and partners, Jinming Jiande Group is poised for continued growth and success in the years to come.

JMJD 是中国领先的优质钢材制造商和出口商。凭借 10 多年的行业经验，该公司已成为全球客户值得信赖的不锈钢、铝、碳钢、镀锌和彩涂卷材供应商。

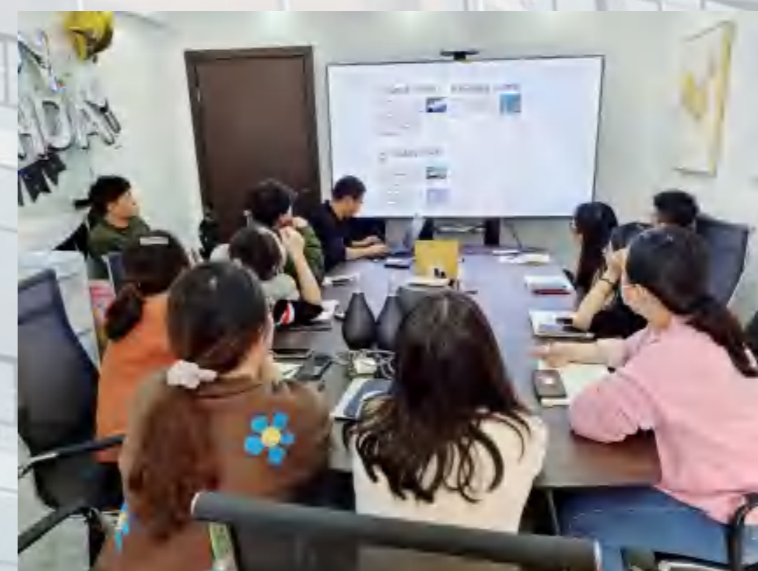
该公司最先进的制造设施配备了最新技术，使其能够生产符合最高行业标准的各种钢铁产品。其熟练的员工队伍确保每件产品都经过精密和精心制作，确保客户只收到最优质的产品。

除了注重品质，金明建德集团还致力于提供卓越的客户服务。其专家团队与客户密切合作，了解他们的具体需求，并提供满足他们要求的量身定制的解决方案。该公司还提供及时的交货和有竞争力的价格，使其成为各种规模企业的理想合作伙伴。

金明建德集团对质量、客户服务和创新的执着，在业界赢得了良好的声誉。其产品用于各种行业，包括建筑、汽车、电器等。公司不断努力改进其产品和服务，以确保其始终处于行业的前沿。

凭借遍布全球的客户和合作伙伴网络，金明建德集团有望在未来几年持续发展并取得成功。

办公环境 OFFICE ENVIRONMENT



ENTERPRISE CULTURE

企业文化

Team development activities

团队拓展活动



we value teamwork, transparency, and innovation. Our culture is built on the foundation of collaboration and mutual respect, where every team member's contribution is appreciated and celebrated. We believe in open communication and transparency in all our dealings, both within the company and with our customers and partners.

我们重视团队合作、透明度和创新。我们的文化建立在协作和相互尊重的基础上，每个团队成员的贡献都受到赞赏和庆祝。我们相信在公司内部以及我们的客户和合作伙伴的所有交易中都应保持开放的沟通和透明度。

企业文化 /Enterprise Culture

诚信.敬业.专业
Integrity. Dedication. Professionalism

企业使命/Enterprise Mission

“我们的使命是提供高质量的金属材料，同时促进可持续发展并与我们的客户和合作伙伴建立持久的关系。”

Our mission is to provide high-quality metal materials while promoting sustainability and building lasting relationships with our customers and partners.

诚信.敬业.专业
Honesty、Dedication、Professionalism

◆ In 2016, Donate books to elementary school students
2016年，捐赠图书给小学生

◆ In 2020 ,We go to the nursing home to accompany the elderly
2019年，我们去养老院陪伴老人



◆ In 2021 ,We donate to disaster-stricken areas
2021年，我们为受灾地区捐款

◆ In 2022, we will go to poverty-stricken areas to help people in difficulty
2022年，我们去贫困地区帮助有困难的人

产品篇

PRODUCT

02

PART TWO

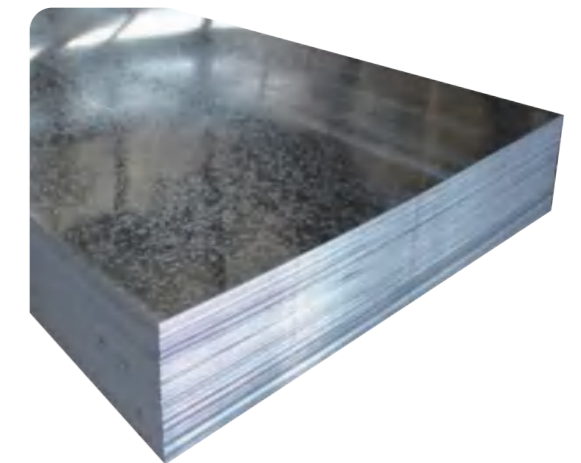
Galvanized Steel

- There are several types of galvanized sheet, each with unique properties and applications. Here are some of the most common types:
- Hot-dip galvanized sheet: This is the most common type of galvanized sheet, where the sheet is dipped into a bath of molten zinc to create a thick layer of coating.
- Electrogalvanized sheet: This type of sheet is coated with zinc through an electrolytic process, which results in a thinner layer of coating than hot-dip galvanized sheet.
- Galvannealed sheet: This is a type of hot-dip galvanized sheet that is annealed to produce a more ductile and formable material.
- Galfan sheet: This is a type of sheet that is coated with a mixture of zinc, aluminum, and rare earth metals to enhance its corrosion resistance.
- Galvalume sheet: This is a type of sheet that is coated with a mixture of zinc and aluminum to provide enhanced corrosion resistance and heat reflectivity.
- Each type of galvanized sheet has its own unique properties, such as corrosion resistance, formability, and strength, which make it suitable for various applications in different industries.

Galvanized Steel Sheet 镀锌板

Grade : SGCC CGCC S280GD+Z S350GD+Z S350GD DX51D+Z(ZF),SPHC,etc
Thickness : 0.12 - 6.0 mm
Width : 1000,1219, 1500 or customized
Length : 2000, 2438, 6069 or customized
Standard : ASTM-A653, JIS G3302, EN10346, etc.
Zinc Coating : Z20g - 275g / m2
Surface Treatment : Oiled (O), Chromium (C), Phosphating (P), Spinpass Resistant to Fingerprints(AFP)

等级: SGCC CGCC S280GD+Z S350GD+Z S350GD DX51D+Z(ZF),SPHC,etc
厚度: 0.12 ~6.0 mm
宽度: 1000,1219,1500, or customized
长度: 2000, 2438, 6069 or customized
执行标准: ASTM-A653, JIS G3302, EN10346, etc.
镀锌层: Z20g - 275g / m2
表面处理: 油(O), 铬(C), 磷化(P), 抗指纹(AFP)



GALVANIZED STEEL

镀锌

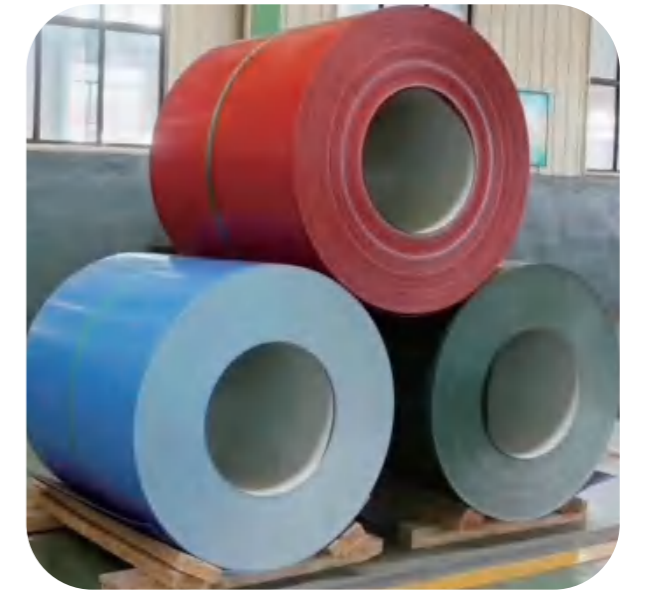


Galvanized Steel Coil 镀锌卷

Material : SGCC CGCC S280GD+Z S350GD+Z S350GD DX51D+Z(ZF),SPHC,etc
 Thickness : 0.12 ~6.0 mm
 Width : 600-1500mm
 Standard : ASTM-A653, JIS G3302, EN10346, etc.
 Zinc Coating : Z20g-275g/m2
 Surface Structure : Regular Spangle , Zero Spangle .etc
 等级 : SGCC CGCC S280GD+Z S350GD+Z S350GD DX51D+Z(ZF),SPHC,etc
 厚度 : 0.12 ~6.0 mm
 宽度 : 600-1500mm
 标准 : ASTM-A653; ASTM a153; JIS G3302; EN10147; DS ; ETC
 镀锌层 : Z20g-275g/m2
 表面结构 : 常规锌花, 无锌花等
 包装 : 标准出口包装

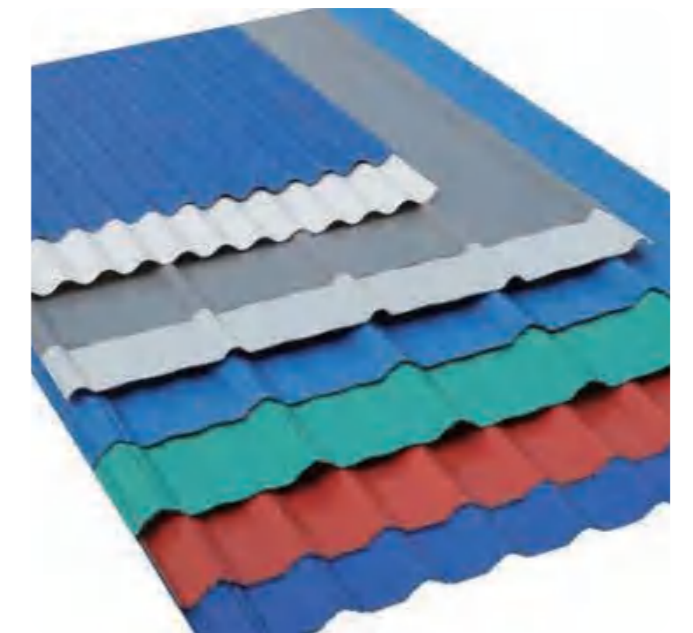
Prepainted Galvanized Steel Coil 彩涂镀锌钢卷

Grade : SGCC, CGCC, SPCC, SPHC, DX 51D, DX52D, DX53D, DX51D+Z,DC51D+Z ,etc
 Width : 600mm - 1500mm
 Thickness : 0.125mm - 4.0mm
 Standard : ASTM, JIS, GB/T, EN
 Zinc coating : 40g/m2 - 275g/m2
 Substrate : Cold rolled Substrate / Hot rolled Substrate
 Color : Ral Color System or as per buyer's color sample
 Surface treatment : Chromated and oiled, and anti-fingerprint
 Packing : Dust-proof kraft sheet, Iron packing、 Angle protective 、 Packing belt.
 等级 : SGCC, CGCC, SPCC, SPHC, DX 51D, DX52D, DX53D, DX51D+Z,DC51D+Z ,etc
 宽度 : 600mm - 1500mm
 厚度 : 0.125mm - 4.0mm
 执行标准 : ASTM, JIS, GB/T, EN
 镀锌层 : 40g/m2 to 275g/m2
 基板 : 冷轧基板/热轧基板
 颜色 : 参考劳尔色卡或者根据客户样品颜色定做。
 表面处理 : 铬酸盐和油, 抗指纹
 包装 : 防尘牛皮纸, 铁质包装, 护角, 打包带。



Galvanized Steel Pipe 镀锌管

Material : Q235 Q345 Q195 Q215 etc
 Wall thickness :1.0~12mm
 DN15~DN40
 Outer Diameter : 21.3mm-48.3mm
 DN50~DN100
 Outer Diameter : 60.3mm-114.3mm
 DN125~DN450
 Outer Diameter : 140mm-219.1mm
 Type:Hot dip galvanized pipe, cold galvanized pipe
 Length : As customer requirements
 Section shape : Round ,square,rectangular, etc.
 Samples : Free samples are provided
 Package : Export standard packing or according to customers' requirement.
 等级 : Q235 Q345 Q195 Q215 etc
 壁厚 :1.0~12mm
 DN15~DN40
 外径 : 21.3mm-48.3mm
 DN50~DN100
 外径 : 60.3mm-114.3mm
 DN125~DN450
 外径 : 140mm-219.1mm
 种类 : 热镀锌管, 冷镀锌管
 长度 : 根据客户要求
 截面形状 : 圆形、方形、矩形等。
 样品 : 提供免费样品
 包装 : 出口标准包装或按客户要求包装。



镀锌
GALVANIZED STEEL

CARBON STEEL

碳钢



Carbon Steel Plate/Sheet 碳钢板

Material : Q235A/B/C , Q275B/C/D , Q195A/B,Q345A/B, A36, A283Gr.C ,A283Gr.D, S235JR/J0/J2 ,S275JR/J0/J2 ,SS400,65Mn, 40Cr,etc.
 Thickness : 0.3-150mm
 Width : 1000, 1250, 1500, 1800 or customized
 Length : 2000, 2438, 6069 or customized
 Standard : ASTM,EN, JIS,GB
 MOQ : 20 Tons
 Rolling process:cold rolled ,hot rolled
 Package : Export standard packing or according to customers' requirement.

等级: Material : Q235A/B/C , Q275B/C/D , Q195A/B,Q345A/B, A36, A283Gr.C ,A283Gr.D, S235JR/J0/J2 ,S275JR/J0/J2 ,SS400, 65Mn,40Cr 等
 厚度: 0.3-150mm
 宽度: 1000, 1250, 1500, 1800 或者根据客户需求
 长度: 2000, 2438, 6069 或者根据客户需求
 执行标准: ASTM,EN, JIS,GB
 轧制工艺: 冷轧, 热轧
 包装: 出口标准包装或按客户要求包装。

Carbon Steel Pipe/Tube 碳钢管

Material : 10#, 20#, Q195, Q235, according to request
 Out Diameter : 100-3200mm
 Wall Thickness : 2-50mm
 Length : 1-12m,or as customer's requirements.
 Standard : AISI,ASTM,GB,DIN,BS,JIS
 Samples : Free samples are provided
 MOQ: 20 Tons
 Package : Export standard packing or according to customers' requirement.

等级: 10#, 20#,Q195, Q235 或者根据客户需求
 外径: 100-3200mm
 壁厚: 2-50mm
 长度: 1-12m 或者根据客户需求
 执行标准: AISI, ASTM, GB, DIN, BS, JIS
 最小起订量: 20吨
 包装: 出口标准包装或按客户要求包装。



Carbon Steel Coil 碳钢卷

Material : Q235A, Q235B, S235JR, ST33, STE255, WSTE255, A36, A283, A573, 65, 70, according to request
 Thickness : 0.3-150mm
 Width : 1000,1250,1500, 1800 or customized
 Length : Coil or customized
 Standard : JIS, ASTM, GB, EN, etc.
 Rolling process:cold rolled ,hot rolled
 Package : Standard exporting packing, seaworthy package

等级: Q235A, Q235B, S235JR, ST33, STE255, WSTE255, A36, A283, A573, 65, 70, 或者根据客户需求
 厚度: 0.3-150mm
 宽度: 1000, 1250, 1500, 1800 或者根据客户需求
 长度: 卷或者根据客户需求
 执行标准: JIS, ASTM, GB, EN等
 轧制工艺: 冷轧, 热轧
 包装: 出口标准包装或按客户要求包装。



常规尺寸都有库存, 如果需要定制尺寸, 交货期根据具体数量来确定

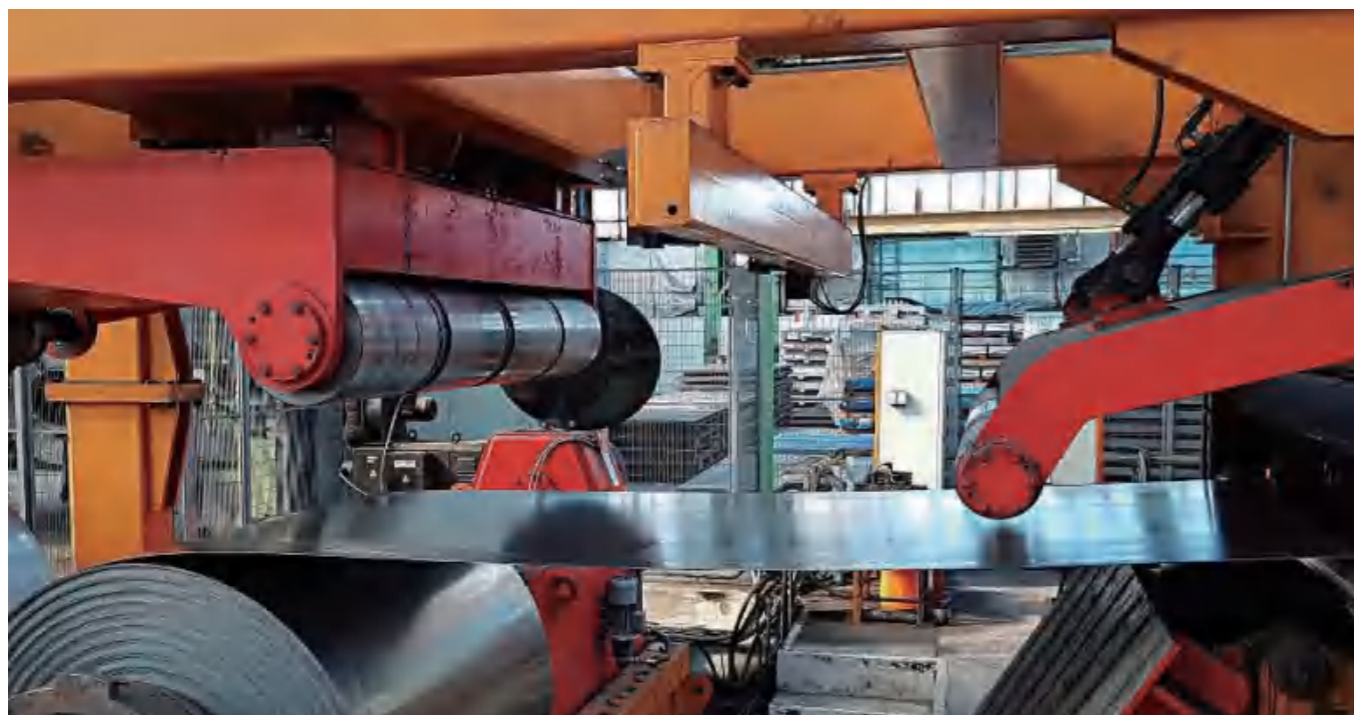
The regular sizes are in stock. If you need custom size, the delivery time will be determined based on the specific quantity.

镀锌和彩涂花型和颜色可以根据客户提供的样品定制

Galvanized and prepainted patterns and colors can be customized according to the samples provided by customers.

PROCESS CENTER

加工中心



STORAGE CENTER

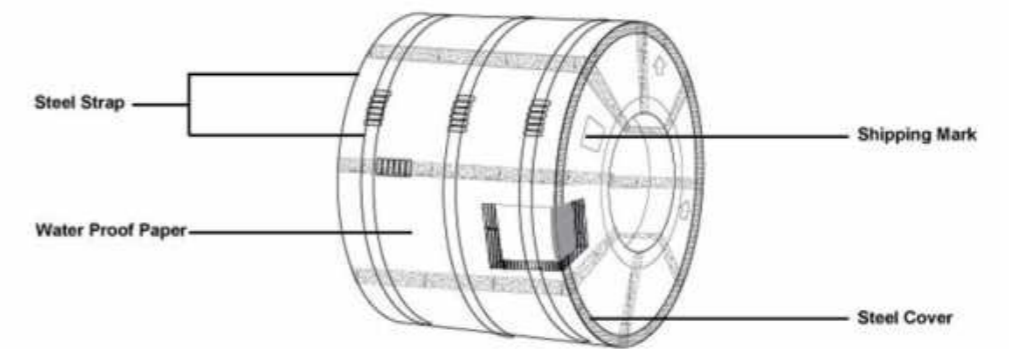
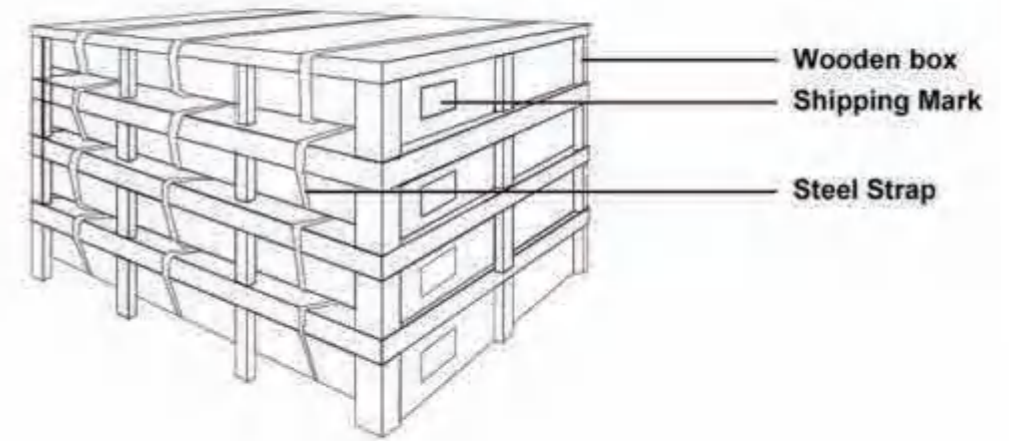
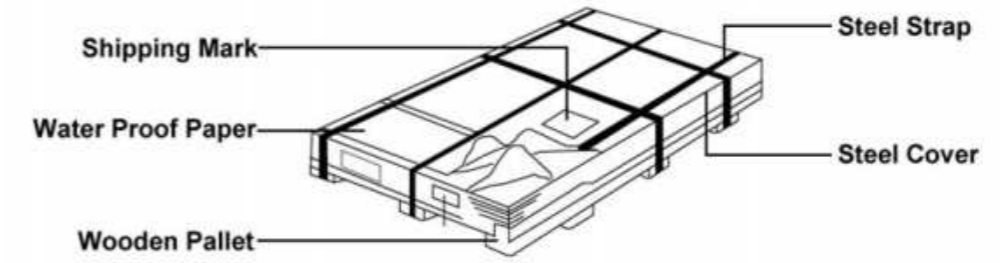
储存中心



储存中心

STORAGE CENTER

**PACKING /
LOADING**
包装/装柜



质检篇

QUALITY INSPECTION

03

PART THREE

QUALITY CERTIFICATION

质量认证

<https://www.steeltd.com> 

Raw Material Inspection: Inspect the incoming raw steel material before production to ensure it meets the required standards. Check the dimensions, composition, and surface quality of the steel.

In-Process Inspection: Inspect the steel during the manufacturing process to identify defects, such as cracks, irregularities, or warping. Perform dimensional checks at each stage of production to ensure that the steel is being manufactured to the required specifications.

Final Inspection: Conduct a final inspection of the finished steel products to ensure that they meet the required quality standards. Check the surface finish, dimensions, and overall appearance of the steel.

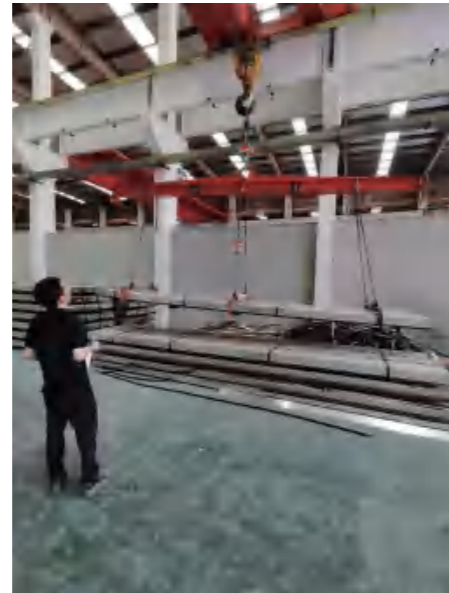
Testing: Perform a variety of tests on the steel products to verify their quality, such as tensile strength, hardness, impact resistance, and corrosion resistance tests.

Documentation: Record all inspection and test results in a detailed report, including any defects or deviations from the required standards. Use this documentation to identify areas for improvement and to maintain consistency in the quality of your steel products.

Continuous Improvement: Continuously monitor the quality of your steel products and review the inspection and testing process to identify opportunities for improvement. Implement corrective actions as necessary to improve the quality of your steel products and maintain customer satisfaction.

THIRD PARTY INSPECTION

第三方检测



QUALITY CERTIFICATION

质量认证

<https://www.steeltd.com> 

无锡金明德  科技有限公司
Wuxi Jin Ming De Industry & Trade Co., Ltd.

产品质量证明书

Certificate of Product Quality
Address: Songshi Road #47 Donghai Yang District Xuzhou/Jiangsu, China

No.	Order No.	Spec.	Chemical Composition (%)												Tensile	Yield	Elongation	Bend	Impact
			C	Mn	P	S	Si	Al	Ni	Cu	Cr	Mo	V	Nb					
2180784	2180784	Q235	0.22	0.28	0.010	0.015	0.035	0.035	0.035	0.0045	0.0045	0.0045	0.0045	0.0045	375	235	24	180	AKU2
2180785	2180785	Q235	0.25	0.30	0.010	0.015	0.035	0.035	0.035	0.0045	0.0045	0.0045	0.0045	0.0045	375	235	24	180	AKU2
2180786	2180786	Q235	0.25	0.30	0.010	0.015	0.035	0.035	0.035	0.0045	0.0045	0.0045	0.0045	0.0045	375	235	24	180	AKU2
2180787	2180787	Q235	0.25	0.30	0.010	0.015	0.035	0.035	0.035	0.0045	0.0045	0.0045	0.0045	0.0045	375	235	24	180	AKU2
2180788	2180788	Q235	0.25	0.30	0.010	0.015	0.035	0.035	0.035	0.0045	0.0045	0.0045	0.0045	0.0045	375	235	24	180	AKU2
2180789	2180789	Q235	0.25	0.30	0.010	0.015	0.035	0.035	0.035	0.0045	0.0045	0.0045	0.0045	0.0045	375	235	24	180	AKU2
合计 TOTAL			75.89																

本证明书不作为交货凭证。如有疑问，请向本公司咨询。
本证明书的有效性依赖于材料符合本证明书所规定的要求。
本证明书的有效性依赖于材料符合本证明书所规定的要求。
本证明书的有效性依赖于材料符合本证明书所规定的要求。

无锡市金明德网络科技有限公司
Wuxi Jin Ming De Industry & Trade Co., Ltd.
地址: 江苏省苏州市东桥街道金明路47号

无锡金明德科技有限公司
Wuxi Jin Ming De Industry & Trade Co., Ltd.

产品质量说明书

Certificate of Product Quality
Address: Songshi Road #47 Donghai Yang District Xuzhou/Jiangsu, China

订单信息				产品信息											
客户名称	客户代码	产品名称	规格	订单号	证书号	表面处理	交货日期								
CUSTOMER	A2114001	Rectangular Hollow Sections Welded Pipe	Q235BH30x3.0x3.0x12	CUSTOMER NO.	BS05V42103945	Cold Formed									
规格 SPECIFICATION				客户订单号											
BS EN 10219-3 P235 JH4				客户订单号											
发布日期				许可证号											
2023/02				2023/02											
合同号				合同号											
2023/02				2023/02											
化学成分 CHEMICAL COMPOSITION (%)															
材料描述		元素		化学成分						力学性能					
材料	规格	C	Mn	P	S	Si	Al	Ni	Cu	Cr	Mo	V	Nb	屈服强度	抗拉强度
Q235	30x3.0x3.0x12	0.25	0.30	0.010	0.015	0.035	0.0045	0.0045	0.0045	0.0045	0.0045	0.0045	0.0045	375	490

REMARKS:
Yield Strength: 375 MPa, Tensile Strength: 490 MPa, Elongation: 24%, Bend: 180°, Impact: AKU2.
NOTE:
1. 本证明书的有效性依赖于材料符合本证明书所规定的要求。
2. 本证明书的有效性依赖于材料符合本证明书所规定的要求。
3. 本证明书的有效性依赖于材料符合本证明书所规定的要求。

无锡市金明德网络科技有限公司
Wuxi Jin Ming De Industry & Trade Co., Ltd.
地址: 江苏省苏州市东桥街道金明路47号

质检篇 / QUALITY INSPECTION